

Ms Dung 0918077755

E: dung.nguyen@vietthaiqua.com



**emec**   
SIMPLE AS WATER

Ms Dung 0918077755

E: [dung.nguyen@vietthaiqua.com](mailto:dung.nguyen@vietthaiqua.com)

# PRIUS



## All the power you need

From the beginning, we decided to meet any dosing needs, even the most extreme. Exactly from this idea originates the series of motor driven pumps PRIUS, entirely designed and developed by EMEC to comply with any need of a higher dosage, with a range of 12 models.

### POWER AND ACCURACY

The series of motors available for the PRIUS allows a wide range of flow rates, from a few liters up to over 1000 liters per hour, and a working pressure which can reach up to 100 bar, while maintaining at the same time, thanks to the quality of design and construction gained by EMEC in 34 years of research and development, the steady and absolute accuracy in dosage distinguishing of all our products.

### RESISTANCE AND SAFETY

To succeed in combining power and accuracy in every situation of use is also possible thanks to a high degree of resistance and versatility. The possibility to choose between models with PTFE diaphragm and models with ceramic or SS plunger, together with liquid ends available in different materials and sizes to choose, makes motor driven pumps PRIUS able to meet any need of use and to result safe and resistant according to the nature of the substance to dose: from very viscous liquids to particularly aggressive chemical agents, from acidic solutions to basic, up to solvents and polymers.

### CONTROL AND MANAGEMENT

Mechanical regulation of desired flow rate of PRIUS pumps is possible thanks to the specific knob. However, for higher management needs, EMEC also created the revolutionary series of multifunction motor driven pumps PRIUS MF. A completely new level of accuracy in dosing control and regulation is ensured by the encoder electronic control, already used successfully in all our control

instruments, the LCD display, permitting an easy and precise reading of all the data, and above all by the possibility to set up PRIUS MF with 7 different working modes. The maximum level of control is also ensured by the integration with our exclusive remote management system ERMES, that allows monitoring of the PRIUS MF pumps from everywhere and in every moment. Furthermore, through the Modbus (RS485) electronic module you can combine MF pumps with other instruments and manage everything through PLC (Programmable Logic Controller).

### RELIABILITY AND EFFICIENCY

The great resistance and strength of PRIUS motor driven pumps ensure a high degree of efficiency and reliability, constant over time, with minimal servicing needs and a particularly long operating life. Lastly, PRIUS MF can comply with any situation by rotating the pump body by 90° over the electronic unit. The top qualities of power and accuracy in dosing, combined with the great reliability and the great versatility of the available models, make the motor driven pumps of PRIUS series suitable for a wide range of applications: from potable water facilities to treatment of water resulting from industrial activities, in purification systems and in food industry as well as in chemical industry. Wherever a top-level dosing system is required, PRIUS is the best answer.





## Diaphragm Pumps

<b>PRIUS D MF - 50/60 HZ 1-PHASE</b> <i>Multifunction eletronic control</i>	4/5
<b>PRIUS D MF AP - HIGH PRESSURE 50 HZ 1-PHASE</b> <i>Multifunction eletronic control</i>	6/7
<b>PRIUS D - 50 Hz 3-PHASE</b>	10/11
<b>PRIUS D - 60 HZ 3-PHASE</b>	12/13
<b>PRIUS D - 50 Hz 1-PHASE</b>	14/15
<b>PRIUS D - 60 HZ 1-PHASE</b>	16/17
<b>PRIUS D AP - HIGH PRESSURE 50 Hz 3-PHASE</b>	18/19
<b>PRIUS D AP - HIGH PRESSURE 60 Hz 3-PHASE</b>	20/21
<b>PRIUS D AP - HIGH PRESSURE 50 Hz 1-PHASE</b>	22/23
<b>PRIUS D AP - HIGH PRESSURE 60 Hz 1-PHASE</b>	24/25
<b>PRIUS D ATEX 2D/2G - 50 Hz 3-PHASE</b>	34/35
<b>PRIUS D ATEX 2D/2G - 60 Hz 3-PHASE</b>	36/37
<b>PRIUS D ATEX 3D/3G - 50 Hz 3-PHASE</b>	38/39
<b>PRIUS D ATEX 3D/3G - 60 Hz 3-PHASE</b>	40/41
<b>PRIUS D AP ATEX 2D/2G - HIGH PRESSURE 50/60 Hz 3-PHASE</b>	42/43



## Plunger Pumps

<b>PRIUS P MF - 50 HZ 1-PHASE</b> <i>Multifunction eletronic control</i>	8/9
<b>PRIUS P - 50 HZ 3-PHASE</b>	26/27
<b>PRIUS P - 60 HZ 3-PHASE</b>	28/29
<b>PRIUS P - 50 HZ 1-PHASE</b>	30/31
<b>PRIUS P - 60 HZ 1-PHASE</b>	32/33
<b>PRIUS P ATEX 2D/2G - 50/60 Hz 3-PHASE</b>	44/45
<b>PRIUS P ATEX 3D/3G - 50/60 Hz 3-PHASE</b>	46/47

# FEATURES

- Multifunction motor pump with inverter
- Working mode: Constant, ppm, %, mlq, pause-work, weekly, mA, Volt and Batch
- Level control
- Alarms
- Stand-by
- Double position of the electronic unit (default or alternative gear box position)
- PTFE diaphragm
- Aluminium enclosure
- Spring return mechanism
- Manual degassing valve (PVDF and PP pump heads)
- Stroke adjustment
- Liquid ends available in different sizes and materials
- Double ball check valve

# PUMP HEADS

PVDF



PP



AISI 316L



PUMP HEAD MOD.	STROKE LENGTH	50/ 60Hz	SPM	PRESSURE		CAPACITY		MOTOR	HOSES CONNECTION		
				bar	psi	l/h	gph		PVDF	SS	PP
NM	3 mm	010060	175	10	145	60	15,8	0,37 kW	1/2" 13 mm	R1/2" G1/2"	1/2" 13 mm
		010030	94			30	7,9				
		010024	70			24	6,3				
		010012	35			12	3,2				
	4 mm	010016	35	10	145	16	4,2	0,37 kW	1/2" 13 mm	R1/2" G1/2"	1/2" 13 mm
TM	3 mm	010105	175	10	145	105	27,7	0,37 kW	3/4" 13 mm	R3/4" G3/4"	3/4" 13 mm
		010056	94			56	14,8				
		010042	70			42	11,1				
		010021	35			21	5,5				
	4 mm	007160	175	7	101,5	160	42,3	0,37 kW	3/4" 13 mm	R3/4" G3/4"	3/4" 13 mm
		007086	94			86	22,7				
		007064	70			64	16,9				
			007032	35			32	8,5			
	6 mm	005240	175	5	72,5	240	63,4	0,37 kW	3/4" 18 mm	R3/4" G3/4"	3/4" 18 mm
		005128	94			128	33,8				
		005096	70			96	25,4				
		005048	35			48	12,7				
4 mm	005350	175	5	72,5	350	92,4	0,37 kW	G1-1/2" 30 mm	R1"	G1-1/2" 30 mm	
	005188	94			188	49,7					
	005140	70			140	37					
	005070	35			70	18,5					
5 mm	005440	175	5	72,5	440	116,2	0,37 kW	G1-1/2" 30 mm	R1"	G1-1/2" 30 mm	
	005236	94			236	62,3					
	005176	70			176	46,5					
	005176	35			88	23,2					
	005530	175			530	140					
6 mm	005284	94	5	72,5	284	75	0,37 kW	G1-1/2" 30 mm	R1"	G1-1/2" 30 mm	
	005212	70			212	56					
	005106	35			106	28					
10 mm	002M00	175	5	72,5	1000	264,2	0,37 kW	G1-1/2" 30 mm (i.d.)	R1"	G1-1/2" 30 mm	
	004520	94			520	137,4					
	005390	70			390	103					
	005180	35			180	47,6					
8 mm	003750	175	5	72,5	750	198	0,37 kW	G1-1/2" 30 mm (i.d.)	R1"	G1-1/2" 30 mm	
	005380	94			380	100					
	005290	70			290	76,6					
	005140	35			140	37					



## PRIUS D MF

### 50/60 Hz 1-PHASE

*Multifunction electronic control*

#### MOTOR

0,37 kW: 3-phase 230 V 1370 rpm

**PRIUS D MF 50/60 Hz with SINGLE-PHASE supply** has: 10 working modes (constant, ppm, %, mlq, pause-work, weekly, pulse, mA, Volt and Batch), level control, alarms, stand-by, double position of the electronic unit (standard or alternative gear box mounting), PTFE diaphragm, aluminium enclosure, spring return mechanism, manual degassing valve (PVDF and PP pump heads), flow regulation, double ball check valve and liquid ends available in different sizes and materials. PVDF, Stainless Steel or PP pump heads available.

Multifunction motor pump PRIUS D MF 50/60 Hz SINGLE-PHASE brings, moreover, a unique level of management thanks to LCD display and encoder electronic controller that ensure the highest accuracy in dosage setting.

**OPTIONS:** MODBUS, IP65 Motor.

DEFAULT GEAR BOX POSITION



ALTERNATIVE GEAR BOX POSITION



# FEATURES

- Multifunction motor driven high pressure pump with inverter
- Working mode: Constant, ppm, %, mlq, pause-work, weekly, mA, Volt and Batch
- Level control
- Alarms
- Stand-by
- Double position of the electronic unit (default or alternative gear box position)
- PTFE diaphragm
- Aluminium enclosure
- Spring return mechanism
- Stroke adjustment
- Double ball check valve

# PUMP HEADS

AISI 316L



PUMP HEAD MOD.	STROKE LENGTH	50Hz		PRESSURE		CAPACITY		MOTOR	HOSES CONNECTION
		SPM		bar	psi	l/h	gph		
LI	1,5 mm	100004	175	100	1450,4	4	1,1	0,37 kW	R3/8"
		100002	94			2	0,5		
		1001,5	70			1,5	0,4		
M1	2 mm	050017	175	50	870,2	17	4,5	0,37 kW	R1/2"
		050009	94			9	2,4		
		050005	70			5	1,3		
		05002,5	35			2,5	0,7		
N	2 mm	030028	175	30	435,1	28	7,4	0,37 kW	R1/2"
		030015	94			15	4		
		030010	70			10	2,6		
		030005	35			5	1,3		
S	4 mm	030076	175	30	435,1	76	20,1	0,37 kW	R1/2"
		030041	94			41	10,8		
		030030	70			30	7,9		
		030015	35			15	4		
T	6 mm	020170	175	20	290,1	170	44,9	0,37 kW	R3/4"
		020091	94			91	24		
		020068	70			68	18		
		020034	35			34	9		





# PRIUS D MF AP

## HIGH PRESSURE 50 Hz 1-PHASE

*Multifunction electronic control*

### MOTOR

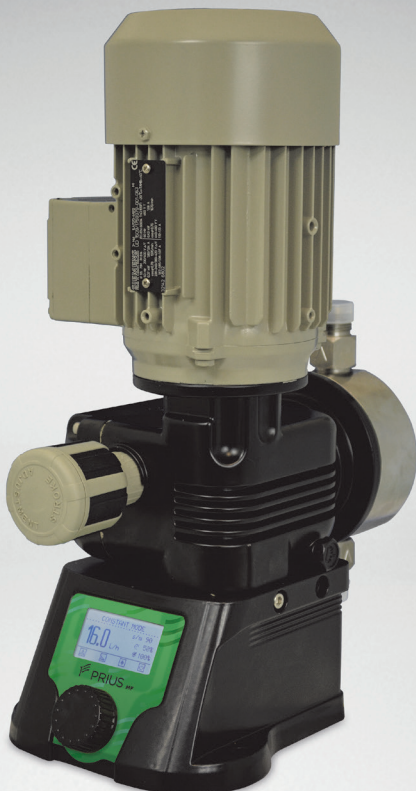
0,37 kW: 3-phase 230 V 1370 rpm

**PRIUS D MF for HIGH PRESSURE** with SINGLE-PHASE supply has: 10 working modes (constant, ppm, %, mlq, pause-work, weekly, pulse, mA, Volt and Batch), level control, alarms, stand-by, double position of the electronic unit (standard or rotated mounting), PTFE diaphragm, **SS pump head**, aluminium enclosure, spring return mechanism, flow regulation and double ball check valve.

Multifunction motor pump PRIUS D MF HIGH PRESSURE SINGLE-PHASE brings, moreover, a unique level of management thanks to LCD display and encoder electronic controller that ensure the highest accuracy in dosage setting.

**OPTIONS:** MODBUS.

DEFAULT GEAR BOX POSITION



ALTERNATIVE GEAR BOX POSITION





# FEATURES

- Multifunction plunger pump with inverter
- Working mode: Constant, ppm, %, mlq, pause-work, weekly, mA, Volt and Batch
- Level control
- Alarms
- Stand-by
- Double position of the electronic unit (default or alternative gear box position)
- Ceramic plunger / Stainless steel (AISI316) plunger
- Aluminium enclosure
- Stroke adjustment
- Double ball check valve

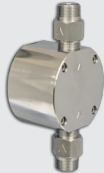
LENGTH PLUNGER	50Hz	SPM	PRESSURE		CAPACITY		MOTOR	HOSES CONNECTION	
			bar	psi	l/h	gph		PP	SS
			14	010024	175	10		145	24
	010013	94			13	3,4			
	010010	70			10	2,6			
	010005	35			5	1,3			
25	010080	175	10	145	80	21,1	0,37 kW	G1/2" 12x18	R1/2"
	010043	94			43	11,4			
	010032	70			32	8,5			
	010016	35			16	4,2			
32	010130	175	10	145	130	34,3	0,37 kW	G1/2" 12x18	R1/2"
	010070	94			70	18,5			
	010052	70			52	13,7			
	010026	35			26	6,9			
40	010210	175	10	145	210	55,5	0,37 kW	G3/4" i.d. 18 mm	R3/4"
	010113	94			113	29,8			
	010084	70			84	22,2			
	010042	35			42	11,1			
50	010320	175	10	145	320	84,5	0,37 kW	G3/4" i.d. 18 mm	R3/4"
	010172	94			172	45,4			
	010128	70			128	33,8			
	010064	35			64	16,9			

## PUMP HEADS

PP



AISI 316L

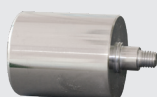


## PLUNGERS

CERAMIC  
SIALOX96



AISI 420



## Plunger Pumps



# PRIUS P MF

## 50 Hz 1-PHASE

*Multifunction electronic control*

### MOTORS

0,18 kW: 3-phase 230 V 1350 rpm  
0,37 kW: 3-phase 230 V 1370 rpm

**PRIUS P MF with SINGLE-PHASE supply** has: 10 working modes (constant, ppm, %, mlq, pause-work, weekly, pulse, mA, Volt and Batch), level control, alarms, stand-by, double position of the electronic unit (standard or rotated mounting), **ceramic or SS plunger**, aluminium enclosure, flow regulation and double ball check valve.

Multifunction motor pump PRIUS P MF SINGLE-PHASE brings, moreover, a unique level of management thanks to LCD display and encoder electronic controller that ensure the highest accuracy in dosage setting

**OPTIONS:** MODBUS, IP65 Motor.

PP PUMP HEAD AND CERAMIC PLUNGER



SS PUMP HAED AND PLUNGER



# FEATURES

- 3-phase motor
- PTFE diaphragm
- Aluminium enclosure
- Spring return mechanism
- Manual degassing valve (PVDF and PP pump heads)
- Double ball check valve
- Stroke adjustment
- Liquid ends available in different sizes and materials

# PUMP HEADS

PVDF



PP



AISI 316L



PUMP HEAD MOD.	STROKE LENGTH	50Hz		PRESSURE		CAPACITY		MOTOR	HOSES CONNECTION				
		SPM		bar	psi	l/h	gph			PVDF	SS	PP	
NM	3 mm	010060	175	10	145	60	15,8	0,18 kW	1/2" 13 mm	R1/2" G1/2"	1/2" 13 mm		
		010030	94			30	7,9						
		010024	70			24	6,3						
		010012	35			12	3,2						
	4 mm	010016	35	10	145	16	4,2	0,18 kW	1/2" 13 mm	R1/2" G1/2"	1/2" 13 mm		
TM	3 mm	010105	175	10	145	105	27,7	0,37 kW	3/4" 13 mm	R3/4" G3/4"	3/4" 13 mm		
		010056	94			56	14,8						
		010042	70			42	11,1						
		010021	35			21	5,5						
	4 mm	007160	175	7	101,5	160	42,3	0,37 kW	3/4" 13 mm	R3/4" G3/4"	3/4" 13 mm		
		007086	94			86	22,7						
		007064	70			64	16,9						
		007032	35			32	8,5						
	6 mm	005240	175	5	72,5	240	63,4	0,37 kW	3/4" 18 mm	R3/4" G3/4"	3/4" 18 mm		
		005128	94			128	33,8						
005096		70	96			25,4							
005048		35	48			12,7							
4 mm	005350	175	5	72,5	350	92,4	0,37 kW	G1-1/2" 30 mm	R1"	G1-1/2" 30 mm			
	005188	94			188	49,7							
	005140	70			140	37							
	005070	35			70	18,5							
5 mm	005440	175	5	72,5	440	116,2	0,37 kW	G1-1/2" 30 mm	R1"	G1-1/2" 30 mm			
	005236	94			236	62,3							
	005176	70			176	46,5							
	005176	35			88	23,2							
6 mm	005530	175	5	72,5	530	140	0,37 kW	G1-1/2" 30 mm	R1"	G1-1/2" 30 mm			
	005284	94			284	75							
	005212	70			212	56							
	005106	35			106	28							
UMS	10 mm	005M00	175	5	72,5	1000	264,1	0,55 kW	G1-1/2" 30 mm	R1"	G1-1/2" 30 mm		
		005520	94			520	137	0,37 kW					
	8 mm	005750	175	5	72,5	750	198,1	0,55 kW	G1-1/2" 30 mm	R1"	G1-1/2" 30 mm		
	10 mm	002M00	175	5	72,5	1000	264,1	0,37 kW	G1-1/2" 30 mm	R1"	G1-1/2" 30 mm		
		004520	94			4	58					520	137,4
		005390	70			5	72,5					390	103
		005180	35			5	72,5					180	47,6
	8 mm	003750	175	5	72,5	750	198,1	0,37 kW	G1-1/2" 30 mm	R1"	G1-1/2" 30 mm		
		005380	94			3	43,5					380	100,4
		005290	70			5	72,5					290	76,6
		005140	35			5	72,5					140	37



## PRIUS D 50 Hz 3-PHASE

### MOTORS

0,18 kW: 3-phase 0,18KW 1350G  
0,37 kW: 3-phase 0,37KW 230/400V  
1400G  
0,55 kW: 3-phase 0,55kW 230/400V  
1400G

**PRIUS D 50 Hz with 3-PHASE** motor has: PTFE diaphragm, aluminium enclosure, spring return mechanism, manual degassing valve (PVDF and PP pump heads), flow regulation, double ball check valve and liquid ends available in different sizes and materials. PVDF, Stainless Steel or PP pump heads available.



# FEATURES

- 3-phase motor
- PTFE diaphragm
- Aluminium enclosure
- Spring return mechanism
- Manual degassing valve (PVDF and PP pump heads)
- Double ball check valve
- Stroke adjustment
- Liquid ends available in different sizes and materials

PUMP HEAD MOD.	STROKE LENGTH	60Hz	SPM	PRESSURE		CAPACITY		MOTOR	HOSES CONNECTION		
				bar	psi	l/h	gph		PVDF	SS	PP
NM	3 mm	010055	175			55	14,5	0,18 kW	1/2" 13 mm	R1/2" G1/2"	1/2" 13 mm
		010027	87	10	145	27	7,1				
		010014	44			14	3,7				
TM	3 mm	010100	175			100	26,4	0,37 kW	3/4" 13 mm	R3/4" G3/4"	3/4" 13 mm
		010050	87	10	145	50	13,2				
		010025	44			25	6,6				
	4 mm	007150	175			150	39,6	0,37 kW	3/4" 13 mm	R3/4" G3/4"	3/4" 13 mm
		007075	87	7	101,5	75	19,8				
		007037	44			37	9,8				
6 mm	005230	175			230	60,7	0,37 kW	3/4" 18 mm	R3/4" G3/4"	3/4" 18 mm	
	005115	87	5	72,5	115	30,4					
	005057	44			57	15,1					
UMS	4 mm	005335	175			335	88,5	0,37 kW	G1-1/2" 30 mm	R1"	G1-1/2" 30 mm
		005165	87	5	72,5	165	43,6				
		005084	44			84	22,2				
	5 mm	005420	175			420	110,9	0,37 kW	G1-1/2" 30 mm	R1"	G1-1/2" 30 mm
		005210	87	5	72,5	210	55,5				
		005105	44			105	27,7				
	6 mm	005505	175			505	133,4	0,37 kW	G1-1/2" 30 mm	R1"	G1-1/2" 30 mm
		005250	87	5	72,5	250	66				
		005126	44			126	33,3				
	10 mm	005950	175	5	72,5	950	251	0,55 kW	G1-1/2" 30 mm	R1"	G1-1/2" 30 mm
	10 mm	002950	175			950	251	0,37 kW	G1-1/2" 30 mm	R1"	G1-1/2" 30 mm
		002472	87	2	29	472	124,7				
002238		44			238	62,9					
6 mm	003720	175			720	190,2	0,37 kW	G1-1/2" 30 mm	R1"	G1-1/2" 30 mm	
	003357	87	3	43,5	357	94,3					
	003181	44			181	47,8					

# PUMP HEADS

PVDF



PP



AISI 316L





## PRIUS D 60 Hz 3-PHASE

### MOTORS

0,37 kW: 3-phase 220/380 V

0,37 kW: 3-phase 110/115 V

0,18 kW: 3-phase 220/380 V

0,21 kW: 3-phase 440/480 V

**PRIUS D 60 Hz with 3-PHASE** motor has: PTFE diaphragm, aluminium enclosure, spring return mechanism, manual degassing valve (PVDF and PP pump heads), flow regulation, double ball check valve and liquid ends available in different sizes and materials. PVDF, Stainless Steel or PP pump heads available.



# FEATURES

- Single-phase motor
- PTFE diaphragm
- Aluminium enclosure
- Spring return mechanism
- Manual degassing valve (PVDF and PP pump heads)
- Double ball check valve
- Stroke adjustment
- Liquid ends available in different sizes and materials

PUMP HEAD MOD.	STROKE LENGTH	50Hz		PRESSURE		CAPACITY		MOTOR	HOSES CONNECTION		
		SPM		bar	psi	l/h	gph		PVDF	SS	PP
NM	3 mm	010060	175	10	145	60	15,8	0,37 kW	1/2"	R1/2"	1/2"
		010030	94			30	7,9				
		010024	70			24	6,3				
		010012	35			12	3,2				
	3 mm	010105	175	10	145	105	27,7	0,37 kW	3/4"	R3/4"	3/4"
		010056	94			56	14,8				
		010042	70			42	11,1				
		010021	35			21	5,5				
TM	4 mm	007160	175	7	101,5	160	42,3	0,37 kW	3/4"	R3/4"	3/4"
		007086	94			86	22,7				
		007064	70			64	16,9				
		007032	35			32	8,5				
	6 mm	005240	175	5	72,5	240	63,4	0,37 kW	3/4"	R3/4"	3/4"
		005128	94			128	33,8				
		005096	70			96	25,4				
		005048	35			48	12,7				
UMS	4 mm	005350	175	5	72,5	350	92,4	0,55 kW	G1-1/2"	R1"	G1-1/2"
		005188	94			188	49,7	0,37 kW			
		005140	70			140	37				
		005070	35			70	18,5				
	5 mm	005440	175	5	72,5	440	116,2		0,55 kW	G1-1/2"	R1"
		005236	94			236	62,3	0,37 kW			
		005176	70			176	46,5				
		005088	35			88	23,2				
6 mm	005530	175	5	72,5	530	140	0,55 kW		G1-1/2"	R1"	G1-1/2"
	005284	94			284	75	0,37 kW				
	005212	70			212	56					
	005106	35			106	28					

# PUMP HEADS

PVDF



PP



AISI 316L







## PRIUS D 50 Hz 1-PHASE

### MOTORS

0,37 kW: motor with high starting torque 0,37KW 1400G

0,55 kW: motor with high starting torque 0,55KW 1400G B14

**PRIUS D 50 Hz with SINGLE-PHASE motor** has: PTFE diaphragm, aluminium enclosure, spring return mechanism, manual degassing valve (PVDF and PP pump heads), flow regulation, double ball check valve and liquid ends available in different sizes and materials. PVDF, Stainless Steel or PP pump heads available.



# FEATURES

- Single-phase motor
- PTFE diaphragm
- Aluminium enclosure
- Spring return mechanism
- Manual degassing valve (PVDF and PP pump heads)
- Double ball check valve
- Stroke adjustment
- Liquid ends available in different sizes and materials

PUMP HEAD MOD.	STROKE LENGTH	60Hz	SPM	PRESSURE		CAPACITY		MOTOR	HOSES CONNECTION		
				bar	psi	l/h	gph		PVDF	SS	PP
NM	3 mm	010055	175			55	14,5	0,37 kW	1/2" 13 mm	R1/2" G1/2"	1/2" 13 mm
		010027	87	10	145	27	7,1				
		010014	44			14	3,6				
	3 mm	010100	175			100	26,4	0,37 kW	3/4" 13 mm	R3/4" G3/4"	3/4" 13 mm
		010050	87	10	145	50	13,2				
		010025	44			25	6,6				
TM	4 mm	007150	175			150	39,6	0,37 kW	3/4" 13 mm	R3/4" G3/4"	3/4" 13 mm
		007075	87	7	101,5	75	19,8				
		007037	44			37	9,7				
	6 mm	005230	175			230	60,7	0,37 kW	3/4" 18 mm	R3/4" G3/4"	3/4" 18 mm
		005115	87	5	72,5	115	30,3				
		005057	44			57	15				
UNS	4 mm	005335	175			335	88,4	0,55 kW	G1-1/2" 30 mm	R1"	G1-1/2" 30 mm
		005165	87	5	72,5	165	43,5	0,37 kW			
		005084	44			84	22,1				
	5 mm	005420	175			420	110,9	0,55 kW	G1-1/2" 30 mm	R1"	G1-1/2" 30 mm
		005210	87	5	72,5	210	55,4	0,37 kW			
		005105	44			105	27,7				
	6 mm	005505	175			505	133,4	0,55 kW	G1-1/2" 30 mm	R1"	G1-1/2" 30 mm
		005250	87	5	72,5	250	66	0,37 kW			
		005126	44			126	33,2				

# PUMP HEADS

PVDF



PP



AISI 316L





## PRIUS D 60 Hz 1-PHASE

### MOTORS

0,37 kW: motor with high starting torque 0,37KW 1400G

0,55 kW: motor with high starting torque 0,55KW 1400G B14

**PRIUS D 60 Hz with SINGLE-PHASE motor** has: PTFE diaphragm, aluminium enclosure, spring return mechanism, manual degassing valve (PVDF and PP pump heads), flow regulation, double ball check valve and liquid ends available in different sizes and materials. PVDF, Stainless Steel or PP pump heads available.



# FEATURES

- 3-phase motor driven high pressure pump
- PTFE diaphragm
- Aluminium enclosure
- Spring return mechanism
- Stroke adjustment
- Double ball check valve

PUMP HEAD MOD.	STROKE LENGTH	50Hz		PRESSURE		CAPACITY		MOTOR	HOSES CONNECTION
		SPM	bar	psi	l/h	gph	SS		
LI	1.5 mm	100004	175	100	1450,4	4	1,1	0,37 kW	3/8"
		100002	94			2	0,5		
		1001,5	70			1,5	0,4		
M1	2 mm	050017	175	50	870,2	17	4,5	0,37 kW	1/2"
		050009	94			9	2,4		
		050005	70			5	1,3		
		05002,5	35			2,5	0,7		
N	2 mm	030028	175	30	435,1	28	7,4	0,37 kW	1/2"
		030014	94			14	3,7		
		030010	70			10	2,6		
		030005	35			5	1,3		
S	4 mm	030076	175	30	435,1	76	20,1	0,37 kW	1/2"
		030041	94			41	10,8		
		030030	70			30	7,9		
		030015	35			15	4		
T	6 mm	020170	175	20	290,1	170	44,9	0,37 kW	3/4"
		020091	94			91	24		
		020068	70			68	18		
		020034	35			34	9		

# PUMP HEADS

AISI 316L



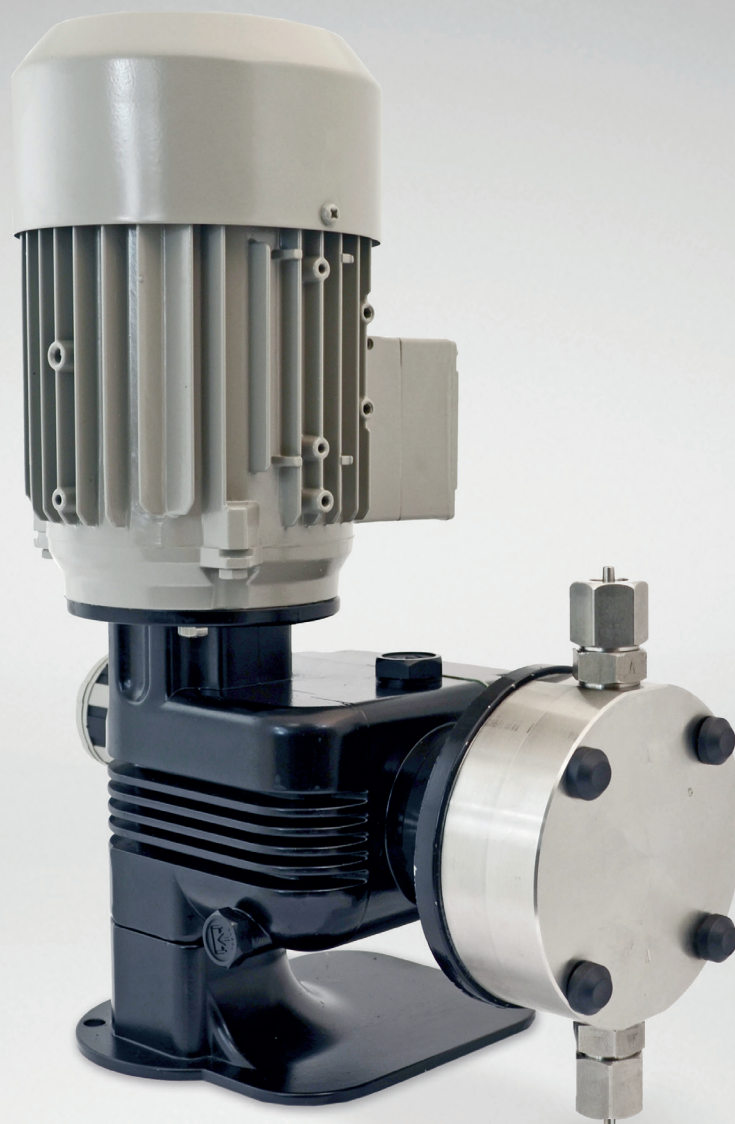


## PRIUS D AP HIGH PRESSURE 50 Hz 3-PHASE

### MOTOR

0,37 kW: 3-phase 0,37KW 230/400V  
1400G

**PRIUS D 50 Hz for HIGH PRESSURE with 3-PHASE motor** has:  
PTFE diaphragm, SS pump head, aluminium enclosure, spring  
return mechanism, flow regulation and double ball check valve.





# FEATURES

- 3-phase motor driven high pressure pump
- PTFE diaphragm
- Aluminium enclosure
- Spring return mechanism
- Stroke adjustment
- Double ball check valve

PUMP HEAD MOD.	STROKE LENGTH	60Hz		PRESSURE		CAPACITY		MOTOR	HOSES CONNECTION
		SPM		bar	psi	l/h	gph		
LI	1.5 mm	100003	175	100	1450,4	3	0,8	0,37 kW	R3/8"
		1001,5	87			1,5	0,4		
M1	2 mm	050014	175	50	725,2	14	3,7	0,37 kW	R1/2"
		050007	87			7	1,8		
		0503,5	44			3,5	0,9		
N	2 mm	030026	175	30	435,1	26	6,9	0,37 kW	R1/2"
		030013	87			13	3,4		
		030006	44			6	1,6		
S	4 mm	030072	175	30	435,1	72	19	0,37 kW	R1/2"
		030036	87			36	9,5		
		030018	44			18	4,8		
T	6 mm	020153	175	20	290,1	153	40,4	0,37 kW	R3/4"
		020076	87			76	20,1		
		020038	44			38	10		

# PUMP HEADS

AISI 316L



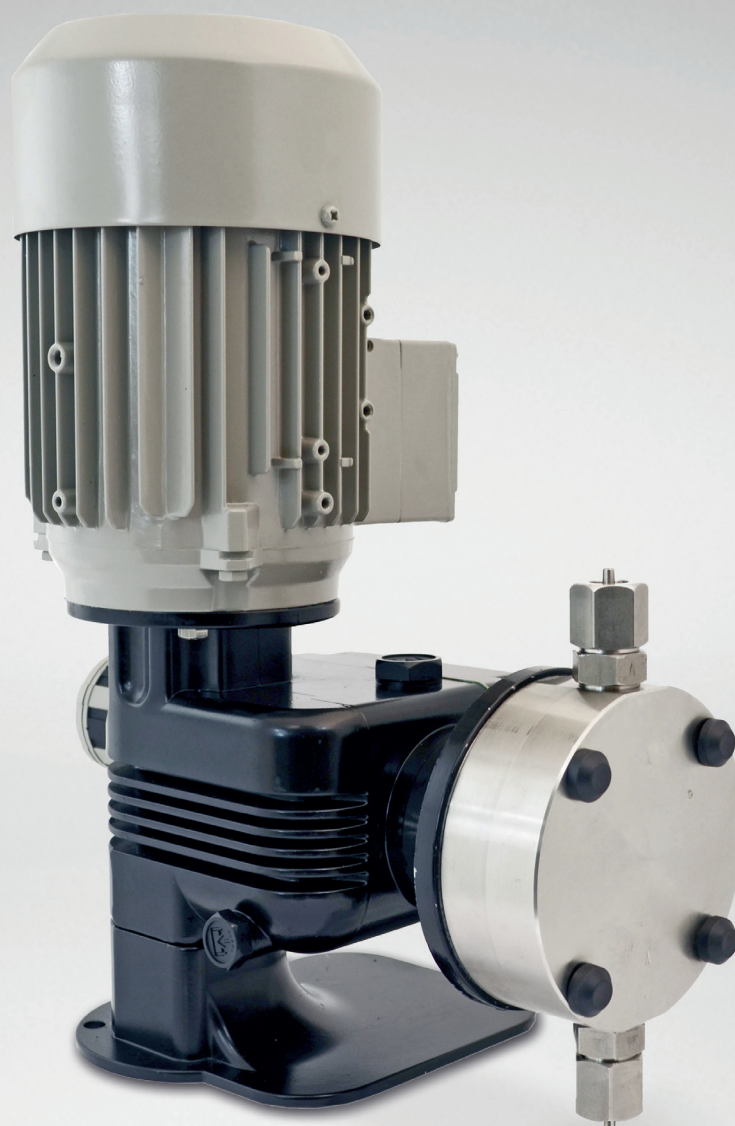


## PRIUS D AP HIGH PRESSURE 60 Hz 3-PHASE

### MOTOR

0,37 kW: 3-phase 220/380 V  
0,43 kW: 3-phase 440/480 V

**PRIUS D 60 Hz for HIGH PRESSURE with 3-PHASE motor** has:  
PTFE diaphragm, SS pump head, aluminium enclosure, spring  
return mechanism, flow regulation and double ball check valve.



# FEATURES

- PTFE diaphragm
- Aluminium enclosure
- Spring return mechanism
- Double ball check valve
- 1-phase motor

STROKE LENGTH	50Hz		PRESSURE		CAPACITY		MOTOR	HOSES CONNECTION
	SPM		bar	psi	l/h	gph		AISI 316L
	1.5 mm	100004	175	100	1450,3	4	1	0,37 kW
	100002	94	2			0,5		
	1001,5	70	1,5			0,3		
2 mm	050017	175	50	725,1	17	4,4	0,37 kW	R1/2"
	050009	94			9	2,3		
	050005	70			5	1,3		
	05002,5	35			2,5	0,6		
2 mm	030028	175	30	435,1	28	7,3	0,37 kW	R1/2"
	030014	94			14	3,6		
	030010	70			10	2,6		
	030005	35			5	1,3		
4 mm	030076	175	30	435,1	76	20	0,37 kW	R1/2"
	030041	94			41	10,8		
	030030	70			30	7,9		
	030015	35			15	3,9		
6 mm	020170	175	20	290	170	44,9	0,55 kW	R3/4"
	020091	94			91	24		
	020068	70			68	17,9	0,37 kW	
	020034	35			34	8,9		

# PUMP HEADS

AISI 316L







## PRIUS D AP

### HIGH PRESSURE 50 Hz 1-PHASE

#### MOTORS

0,37 kW: 1-phase 230 V 1350 rpm

0,55 kW: 1-phase 230 V 1370 rpm

**PRIUS D 50 Hz for HIGH PRESSURE with SINGLE-PHASE motor** has: PTFE diaphragm, SS pump head, aluminium enclosure, spring return mechanism, flow regulation and double ball check valve.



# FEATURES

- PTFE diaphragm
- Aluminium enclosure
- Spring return mechanism
- Double ball check valve
- 1-phase motor

PUMP HEAD MOD.	STROKE LENGTH	60Hz	SPM	PRESSURE		CAPACITY		MOTOR	HOSES CONNECTION
				bar	psi	l/h	gph		AISI 316L
LM AP	1.5 mm	100003	175	100	1450,3	3	0,7	0,37 kW	R3/8"
		1001,5	87			1,5	0,3		
MM AP	2 mm	050014	175	50	725,1	14	3,6	0,37 kW	R1/2"
		050007	87			7	1,8		
		0503,5	44			3,5	0,9		
NM AP	2 mm	030026	175	30	435,1	26	6,8	0,37 kW	R1/2"
		030013	87			13	3,4		
		030006	44			6	1,5		
SM AP	4 mm	030072	175	30	435,1	72	19	0,37 kW	R1/2"
		030036	87			36	9,5		
		030018	44			18	4,7		
TM AP	6 mm	020153	175	20	290	153	40,4	0,55 kW	R3/4"
		020076	87			76	20	0,37 kW	
		020038	44			38	10		

# PUMP HEADS

AISI 316L





## PRIUS D AP HIGH PRESSURE 60 Hz 1-PHASE

### MOTORS

0,37 kW: 1-phase 230 V 1700 rpm  
0,55 kW: 1-phase 230 V 1700 rpm  
0,37 kW: 1-phase 115 V 1680 rpm

**PRIUS D 60 Hz for HIGH PRESSURE with SINGLE-PHASE motor** has: PTFE diaphragm, SS pump head, aluminium enclosure, spring return mechanism, flow regulation and double ball check valve.





# FEATURES

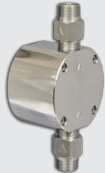
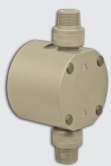
- 3-phase motor
- Ceramic plunger / Stainless steel (AISI316) plunger
- Aluminium enclosure
- Stroke adjustment

LENGTH PLUNGER	50Hz	SPM	PRESSURE		CAPACITY		MOTOR	HOSES CONNECTION		
			bar	psi	l/h	gph		PP	SS	
			14	010024	175				24	6,3
	010013	94	10	145	13	3,4				
	010010	70			10	2,6				
	010005	35			5	1,3				
15 mm	25	010080	175			80	21,1	0,18 kW	G1/2" 12x18	R1/2"
		010043	94	10	145	43	11,4			
		010032	70			32	8,5			
		010016	35			16	4,2			
		010130	175			130	34,3	0,18 kW	G1/2" 12x18	R1/2"
		010070	94	10	145	70	18,5			
		010052	70			52	13,7			
		010026	35			26	6,9			
		010210	175			210	55,5	0,37 kW	G3/4" i.d. 18 mm	R3/4"
		010113	94	10	145	113	29,8			
		010084	70			84	22,2			
		010042	35			42	11,1			
		010320	175			320	84,5	0,37 kW	G3/4" i.d. 18 mm	R3/4"
		010172	94	10	145	172	45,4			
		010128	70			128	33,8			
	010064	35			64	16,9				
	007508	175			508	35	0,55 kW	/	R1"	
	007273	94	7	101,5	273	35	0,37 kW			
	007203	70			203	35				
	007101	35			101	26,7				

## PUMP HEADS

PP

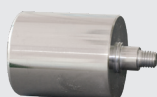
AISI 316L



## PLUNGERS

CERAMIC  
SIALOX96

AISI 420





## PRIUS P 50 Hz 3-PHASE

### MOTORS

0,18 kW: 3-phase 230/400 V

0,37 kW: 3-phase 230/400 V

**PRIUS P 50 Hz with 3-PHASE motor** has: ceramic or SS plunger, aluminium enclosure, flow regulation and double ball check valve.

PP PUMP HEAD AND CERAMIC PLUNGER



SS PUMP HEAD AND PLUNGER





# FEATURES

- 3-phase motor
- Ceramic or stainless steel (AISI420) plunger
- Aluminium enclosure
- Stroke adjustment

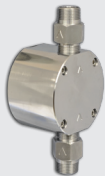
LENGTH PLUNGER	60Hz	SPM	PRESSURE		CAPACITY		MOTOR	HOSES CONNECTION	
			bar	psi	l/h	gph		PP	SS
14	010023	175			23	6,3	0,18 kW	G1/2" 12x18	R1/2"
	010011	87	10	145	11	3,2			
	010005	44			5	1,3			
25	010076	175			76	21,1	0,18 kW	G1/2" 12x18	R1/2"
	010038	87	10	145	38	10,6			
	010019	44			19	5			
32	010126	175			126	34,3	0,18 kW	G1/2" 12x18	R1/2"
	010063	87	10	145	63	17,2			
	010031	44			31	8,2			
40	010195	175			195	55,5	0,37 kW	G3/4" i. d. 18 mm	R3/4"
	010097	87	10	145	97	27,7			
	010048	44			48	12,7			
50	010300	175			300	84,5	0,37 kW	G3/4" i. d. 18 mm	R3/4"
	010150	87	10	145	150	42,3			
	010075	44			75	19,8			
63	007469	175			469	123,9	0,55 kW	/	R1"
	007234	87	7	101,5	234	61,8			
	007117	44			117	30,9			

## PUMP HEADS

PP



AISI 316L

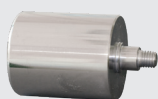


## PLUNGERS

CERAMIC  
SIALOX96



AISI 420





## PRIUS P 60 Hz 3-PHASE

### MOTORS

0,18 kW: 3-phase 460 V

0,37 kW: 3-phase 460 V

**PRIUS P 60 Hz with 3-PHASE motor** has: ceramic or SS plunger, aluminium enclosure, flow regulation and double ball check valve.

PP PUMP HEAD AND CERAMIC PLUNGER



SS PUMP HEAD AND PLUNGER



# FEATURES

- Ceramic or stainless steel (AISI420) plunger
- Aluminium enclosure
- Spring return mechanism
- Double ball check valve
- 1-phase motor

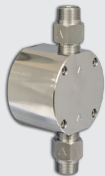
PLUNGER STROKE LENGTH	50Hz	SPM	PRESSURE		CAPACITY		MOTOR	HOSES CONNECTION	
			bar	psi	l/h	gph		PP	SS
			14 mm	010024	175				24
	010013	94	10	145	13	3,4			
	010010	70			10	2,6			
	010005	35			5	1,3			
25 mm	010080	175			80	21,1	0,37 kW	G1/2" 12x18	R1/2"
	010043	94	10	145	43	11,3			
	010032	70			32	8,4			
	010016	35			16	4,2			
32 mm	010130	175			130	34,3	0,37 kW	G1/2" 12x18	R1/2"
	010070	94	10	145	70	18,4			
	010052	70			52	13,7			
	010026	35			26	6,8			
40 mm	010210	175			210	55,4	0,55 kW	G3/4" d.i. 18 mm	R3/4"
	010113	94	10	145	113	29,8	0,37 kW		
	010084	70			84	22,1			
	010042	35			42	11			
50 mm	010320	175			320	84,5	0,55 kW	G3/4" d.i. 18 mm	R3/4"
	010172	94	10	145	172	45,4	0,37 kW		
	010128	70			128	33,8			
	010064	35			64	16,9			
63 mm	007508	175			508	134,1	0,55 kW	/	R1"
	007273	94	7	101,5	273	72,1	0,37 kW		
	007203	70			203	53,6			
	007101	35			101	26,6			

## PUMP HEADS

PP



AISI 316L

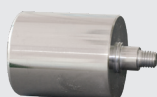


## PLUNGERS

CERAMIC  
SIALOX96



AISI 420





## Plunger Pumps



# PRIUS P

## 50 Hz 1-PHASE

### MOTORS

0,37 kW: 1-phase 230/400 V 1350 rpm  
0,55 kW: 1-phase 230/400 V 1370 rpm

**PRIUS P 50 Hz with SINGLE-PHASE motor** has: ceramic or SS plunger, aluminium enclosure, flow regulation and double ball check valve.

PP PUMP HEAD AND CERAMIC PLUNGER



SS PUMP HEAD AND PLUNGER



# FEATURES

- Ceramic or stainless steel (AISI420) plunger
- Aluminium enclosure
- Spring return mechanism
- Double ball check valve
- 1-phase motor

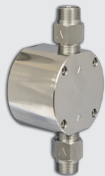
PLUNGER STROKE LENGTH	60Hz	SPM	PRESSURE		CAPACITY		MOTOR	HOSES CONNECTION	
			bar	psi	l/h	gph		PP	SS
14 mm	010023	175			23	6			
	010011	87	10	145	11	2,9	0,37 kW	G1/2" 12x18	R1/2"
	010005	44			5	1,3			
25 mm	010076	175			76	20			
	010038	87	10	145	38	10	0,37 kW	G1/2" 12x18	R1/2"
	010019	44			19	5			
32 mm	010126	175			126	33,2			
	010063	87	10	145	63	16,6	0,37 kW	G1/2" 12x18	R1/2"
	010031	44			31	8,1			
40 mm	010195	175			195	51,5			
	010097	87	10	145	97	25,6	0,37 kW	G3/4" d.i. 18 mm	R3/4"
	010048	44			48	12,6			
50 mm	010300	175			300	79,2			
	010150	87	10	145	150	39,6	0,37 kW	G3/4" d.i. 18 mm	R3/4"
	010075	44			75	19,8			
63 mm	007469	175			469	123,8	0,55 kW		
	007234	87	7	101,5	234	61,8	0,37 kW	/	R1"
	007117	44			117	30,9			

## PUMP HEADS

PP



AISI 316L

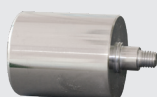


## PLUNGERS

CERAMIC  
SIALOX96



AISI 420



## Plunger Pumps



# PRIUS P

## 60 Hz 1-PHASE

### MOTORS

0,37 kW: 1-phase 230/400 V 1700 rpm  
0,55 kW: 1-phase 230/400 V 1700 rpm  
0,37 kW: 1-phase 115 V 1680 rpm

**PRIUS P 60 Hz with SINGLE-PHASE motor** has: ceramic or SS plunger, aluminium enclosure, flow regulation and double ball check valve.

PP PUMP HEAD AND CERAMIC PLUNGER



SS PUMP HEAD AND PLUNGER



# FEATURES

- 3-phase motor
- PTFE diaphragm
- Aluminium enclosure
- Spring return mechanism
- Double ball check valve
- Stroke adjustment
- Stainless steel liquid ends (AISI 316)

PUMP HEAD MOD.	STROKE LENGTH	50Hz	SPM	PRESSURE		CAPACITY		HOSES CONNECTION	2G	2D
				bar	psi	l/h	gph			
				Motor kW	Motor kW					
NM	1,5 mm	010006	35	10	145	6	1,5			
	3 mm	010060	175			60	15,8	R1/2" G1/2"	0,18	0,25
		010030	94	10	145	30	7,9			
		010024	70			24	6,3			
		010012	35			12	3,1			
4 mm	010016	35	10	145	16	4,2				
TM	3 mm	010105	175			105	27,7	R3/4" G3/4"	0,37	0,37
		010056	94	10	145	56	14,7			
		010042	70			42	11			
	4 mm	010021	35			21	5,5	R3/4" G3/4"	0,37	0,37
		007160	175			160	42,2			
		007086	94	7	101,5	86	22,7			
		007064	70			64	16,9			
		007032	35			32	8,4			
		005240	175			240	63,4			
		005128	94			128	33,8			
	6 mm	005096	70	5	72,5	96	25,3	R3/4" G3/4"	0,37	0,37
		005048	35			48	12,6			

# PUMP HEADS

AISI 316L





# PRIUS D ATEX 2D/2G

## 50 Hz 3-PHASE



**CATEGORY 2**

Installation areas liable to be endangered by explosive atmospheres. Pumps intended for use in areas in which explosive atmospheres are likely to occur.

	<b>G</b> (gas)	<b>D</b> (dust)
199/92/EC	Zone 1	Zone 21

ATEX-approved pumps are for use in **potentially explosive atmospheres**.

Explosive atmospheres consists of air and combustible matter, such as gases, vapours, mists or dusts in which the explosion spreads after ignition.

We offer explosion-proof or dust-ignition-proof motors in accordance with the ATEX directive **2014/34/UE**.

ATEX-approved pumps can be used in areas (zones) classified according to the directive 1999/92/EC.

**ATEX**

CE II 2D IIIC T200°C, resp T135°C

CE II 2G c IIB T3, T4

**MOTORS**

0,18 kW: 3-phase 220-240/380-420 V

0,25 kW: 3-phase 220-240/380-420 V

0,37 kW: 3-phase 220-240/380-420 V

**PRIUS D 50 Hz with 3-PHASE motor and ATEX certification** has: PTFE diaphragm, aluminium enclosure, spring return mechanism, flow regulation, double ball check valve and liquid ends in Stainless Steel (AISI 316L).



# FEATURES

- 3-phase motor
- PTFE diaphragm
- Aluminium enclosure
- Spring return mechanism
- Double ball check valve
- Stroke adjustment
- Stainless steel liquid ends (AISI 316)

PUMP HEAD MOD.	STROKE LENGTH	60Hz	SPM	PRESSURE		CAPACITY		HOSES CONNECTION		2G	2D
				bar	psi	l/h	gph	Motor	Motor		
NM	1,5 mm	010007	35	10	145	7	1,8	R1/2" G1/2"	0,18 kW	0,25 kW	
		010055	175			55	14,5				
	3 mm	010027	87	10	145	27	7,1	R3/4" G3/4"	0,37 kW	0,37 kW	
		010014	44			14	3,6				
TM	3 mm	010100	175			100	26,4	R3/4" G3/4"	0,37 kW	0,37 kW	
		010050	87	10	145	50	13,2				
	4 mm	010025	44			25	6,6	R3/4" G3/4"	0,37 kW	0,37 kW	
		007150	175			150	39,6				
	6 mm	007075	87	7	101,5	75	19,8	R3/4" G3/4"	0,37 kW	0,37 kW	
		007037	44			37	9,7				
		005230	175			230	60,7				
		005115	87	5	72,5	115	30,3				
	005057	44			57	15					

# PUMP HEADS

AISI 316L



# PRIUS D ATEX 2D/2G

## 60 Hz 3-PHASE



**CATEGORY 2**

Installation areas liable to be endangered by explosive atmospheres. Pumps intended for use in areas in which explosive atmospheres are likely to occur.

	<b>G</b> (gas)	<b>D</b> (dust)
199/92/EC	Zone 1	Zone 21

ATEX-approved pumps are for use in **potentially explosive atmospheres**.

Explosive atmospheres consists of air and combustible matter, such as gases, vapours, mists or dusts in which the explosion spreads after ignition.

We offer explosion-proof or dust-ignition-proof motors in accordance with the ATEX directive **2014/34/UE**.

ATEX-approved pumps can be used in areas (zones) classified according to the directive 1999/92/EC.

**ATEX**

  II 2D IIIC T200°C, resp T135°C

  II 2G c IIB T3, T4

**MOTORS**

- 0,18 kW: 3-phase 440-480 V
- 0,25 kW: 3-phase 440-480 V
- 0,37 kW: 3-phase 440-480 V

**PRIUS D 60 Hz with 3-PHASE motor and ATEX certification** has: PTFE diaphragm, aluminium enclosure, spring return mechanism, flow regulation, double ball check valve and liquid ends in Stainless Steel (AISI 316L).



# FEATURES

- 3-phase motor
- PTFE diaphragm
- Aluminium enclosure
- Spring return mechanism
- Double ball check valve
- Stroke adjustment

# PUMP HEADS

PVDF



PP



AISI 316L



PUMP HEAD STROKE LENGTH	50Hz	SPM	PRESSURE		CAPACITY		PUMP HEAD			3G	3D		
			bar	psi	l/h	gph	PVDF	AISI 316L	PP	Motor kW	Motor kW		
NM 3 mm	010060	175	10	145	60	15,8	1/2" 13 mm	R1/2" G1/2"	1/2" 13 mm	0,18	0,25		
	010030	94			30	7,9							
	010024	70			24	6,3							
	010012	35			12	3,1							
4 mm	010016	35	10	145	16	4,2							
TM 3 mm	010105	175	10	145	105	27,7	3/4" 13 mm	R3/4" G3/4"	3/4" 13 mm	0,37	0,37		
	010056	94			56	14,7							
	010042	70			42	11							
	010021	35			21	5,5							
	4 mm	007160	175	7	101,5	160	42,2	3/4" 13 mm	R3/4" G3/4"	3/4" 13 mm	0,37	0,37	
	007086	94	86			22,7							
	007064	70	64			16,9							
	007032	35	32			8,4							
	6 mm	005240	175	5	72,5	240	63,4	3/4" 18 mm	R3/4" G3/4"	3/4" 18 mm	0,37	0,37	
	005128	94	128			33,8							
	005096	70	96			25,3							
	005048	35	48			12,6							
4 mm	005350	175	5	72,5	350	92,4	G1-1/2" 30 mm	R1"	G1-1/2" 30 mm	0,37	0,37		
	005188	94			188	49,6							
	005140	70			140	36,9							
	005070	35			70	18,4							
5 mm	005440	175	5	72,5	440	116,2	G1-1/2" 30 mm	R1"	G1-1/2" 30 mm	0,37	0,37		
	005236	94			236	62,3							
	005176	70			176	46,4							
	005088	35			88	23,2							
6 mm	005530	175	5	72,5	530	140	G1-1/2" 30 mm	R1"	G1-1/2" 30 mm	0,37	0,37		
	005284	94			284	75							
	005212	70			212	56							
	005106	35			106	28							
10 mm	005M00	175	5	72,5	1000	264,1	G1-1/2" 30 mm	R1"	G1-1/2" 30 mm	0,55	0,55		
	005520	94			520	137,3				0,37	0,37		
8 mm	005750	175	5	72,5	750	198,1	G1-1/2" 30 mm	R1"	G1-1/2" 30 mm	0,55	0,55		
10 mm	002M00	175	5	72,5	1000	264,1	G1-1/2" 30 mm	R1"	G1-1/2" 30 mm	0,37	0,37		
	004520	94			4	58						520	137,3
	005390	70			390	103							
	005180	35			180	47,5							
8 mm	003750	175	5	72,5	750	198,1	G1-1/2" 30 mm	R1"	G1-1/2" 30 mm	0,37	0,37		
	005380	94			380	100,3							
	005290	70			290	76,6							
005140	35	140	36,9										





# PRIUS D ATEX 3D/3G

## 50 Hz 3-PHASE



**CATEGORY 3**

Installation areas liable to be endangered by explosive atmospheres.

Pumps intended for use in areas in which explosive atmospheres are only rarely occur.

	G (gas)	D (dust)
199/92/EC	Zone 2	Zone 22

**PRIUS D with 3-PHASE motor and ATEX certification** has: PTFE diaphragm, aluminium enclosure, spring return mechanism, flow regulation, double ball check valve and liquid ends in different materials.

ATEX-approved pumps are for use in **potentially explosive atmospheres**.

Explosive atmospheres consists of air and combustible matter, such as gases, vapours, mists or dusts in which the explosion spreads after ignition.

We offer explosion-proof or dust-ignition-proof motors in accordance with the ATEX directive **2014/34/UE**.

ATEX-approved pumps can be used in areas (zones) classified according to the directive 1999/92/EC.

**ATEX**

CE II 3D Ex h IIIC T200°C, resp T135°C Dc

CE II 3G Ex h IIB T3, T4 Gc

**MOTORS**

- 0,18 kW: 3-phase1400G 50 Hz GAS
- 0,37 kW: 3-phase1400G 50 Hz GAS
- 0,25 kW: 3-phase 1325G 50 Hz DUST
- 0,37 kW: 3-phase 1375G 50 Hz DUST





# FEATURES

- 3-phase motor
- PTFE diaphragm
- Aluminium enclosure
- Spring return mechanism
- Double ball check valve
- Stroke adjustment

PUMP HEAD	STROKE LENGTH	60Hz	SPM	PRESSURE		CAPACITY		PUMP HEAD			3G	3D
				bar	psi	l/h	gph	PVDF	AISI 316L	PP	Motor kW	Motor kW
NM	3 mm	010055	175	10	145	55	14,5	1/2" 13 mm	R1/2" G1/2"	1/2" 13 mm	0,18	0,25
		010027	87			27	7,1					
		010014	44			14	3,6					
TM	3 mm	010105	175	10	145	100	26,4	3/4" 13 mm	R3/4" G3/4"	3/4" 13 mm	0,37	0,37
		010056	87			50	13,2					
		010042	44			25	6,6					
	4 mm	007160	175	7	101,5	150	39,6	3/4" 13 mm	R3/4" G3/4"	3/4" 13 mm	0,37	0,37
		007086	87			75	19,8					
		007064	44			37	9,7					
6 mm	005240	175	5	72,5	230	60,7	3/4" 18 mm	R3/4" G3/4"	3/4" 18 mm	0,37	0,37	
	005128	87			115	30,3						
	005096	44			57	15						
UNS	4 mm	005350	175	5	72,5	335	88,4	G1-1/2" 30 mm	R1"	G1-1/2" 30 mm	0,37	0,37
		005188	87			165	43,5					
		005140	44			84	22,1					
	5 mm	005440	175	5	72,5	420	110,9	G1-1/2" 30 mm	R1"	G1-1/2" 30 mm	0,37	0,37
		005236	87			210	55,4					
		005176	44			105	27,7					
	6 mm	005530	175	5	72,5	505	133,4	G1-1/2" 30 mm	R1"	G1-1/2" 30 mm	0,37	0,37
		005284	87			250	66					
		005212	44			126	33,2					

# PUMP HEADS

PVDF



PP



AISI 316L





# PRIUS D ATEX 3D/3G

## 60 Hz 3-PHASE



**CATEGORY 3**

Installation areas liable to be endangered by explosive atmospheres.

Pumps intended for use in areas in which explosive atmospheres are only rarely occur.

	<b>G</b> (gas)	<b>D</b> (dust)
199/92/EC	Zone 2	Zone 22

**PRIUS D with 3-PHASE motor and ATEX certification** has: PTFE diaphragm, aluminium enclosure, spring return mechanism, flow regulation, double ball check valve and liquid ends in different materials.

ATEX-approved pumps are for use in **potentially explosive atmospheres**.

Explosive atmospheres consists of air and combustible matter, such as gases, vapours, mists or dusts in which the explosion spreads after ignition.

We offer explosion-proof or dust-ignition-proof motors in accordance with the ATEX directive **2014/34/UE**.

ATEX-approved pumps can be used in areas (zones) classified according to the directive 1999/92/EC.

**ATEX**

CE II 3D Ex h IIIC T200°C, resp T135°C Dc

CE II 3G Ex h IIB T3, T4 Gc

**MOTORS**

- 0,18 kW: 3-phase 1400G 50 Hz GAS
- 0,37 kW: 3-phase 1400G 50 Hz GAS
- 0,25 kW: 3-phase 1325G 50 Hz DUST
- 0,37 kW: 3-phase 1375G 50 Hz DUST



# FEATURES

- 3-phase motor
- PTFE diaphragm
- Aluminium enclosure
- Spring return mechanism
- Double ball check valve
- Stroke adjustment

PUMP HEAD	STROKE LENGTH	50Hz	SPM	PRESSURE		CAPACITY		HOSES CONNECTION	MOTOR
				bar	psi	l/h	gph	SS	
LM AP	1.5 mm	100004	175	100	1450,3	4	1	R3/8"	0,37 kW
		100002	94			2	0,5		
		1001,5	70			1,5	0,3		
MM AP	2 mm	050017	175	50	725,1	17	4,4	R1/2"	0,37 kW
		050009	94			9	2,3		
		050005	70			5	1,3		
		05002,5	35			2,5	0,6		
NM AP	2 mm	030028	175	30	435,1	28	7,3	R1/2"	0,37 kW
		030015	94			15	3,9		
		030010	70			10	2,6		
		030005	35			5	1,3		
SM AP	4 mm	030076	175	30	435,1	76	20	R1/2"	0,37 kW
		030041	94			41	10,8		
		030030	70			30	7,9		
		030015	35			15	3,9		
TM AP	6 mm	020170	175	20	290	170	44,9	R3/4"	0,37 kW
		020091	94			91	24		
		020068	70			68	17,9		
		020034	35			34	8,9		

# PUMP HEAD

AISI 316L



PUMP HEAD	STROKE LENGTH	60Hz	SPM	PRESSURE		CAPACITY		HOSES CONNECTION	MOTOR
				bar	psi	l/h	gph	SS	
LM AP	1.5 mm	100003	175	100	1450,3	3	0,7	R3/8"	0,37 kW
		1001,5	87			1,5	0,3		
MM AP	2 mm	050014	175	50	725,1	14	3,6	R1/2"	0,37 kW
		050007	87			7	1,8		
		0503,5	44			3,5	0,9		
NM AP	2 mm	030026	175	30	435,1	26	6,8	R1/2"	0,37 kW
		030013	87			13	3,4		
		030006	44			6	1,5		
SM AP	4 mm	030072	175	30	435,1	72	19	R1/2"	0,37 kW
		030036	87			36	9,5		
		030018	44			18	4,7		
TM AP	6 mm	020153	175	20	290	153	40,4	R3/4"	0,37 kW
		020076	87			76	20		
		020038	44			38	10		

# PRIUS D AP ATEX 2D/2G

## HIGH PRESSURE 50/60 Hz 3-PHASE



**CATEGORY 2**

Installation areas liable to be endangered by explosive atmospheres.

Pumps intended for use in areas in which explosive atmospheres are likely to occur.

	<b>G</b> (gas)	<b>D</b> (dust)
199/92/EC	Zone 1	Zone 21

ATEX-approved pumps are for use in **potentially explosive atmospheres**.

Explosive atmospheres consists of air and combustible matter, such as gases, vapours, mists or dusts in which the explosion spreads after ignition.

We offer explosion-proof or dust-ignition-proof motors in accordance with the ATEX directive **2014/34/UE**.

ATEX-approved pumps can be used in areas (zones) classified according to the directive 1999/92/EC.

**ATEX**

  II 2D IIIC T200°C, resp T135°C

  II 2G c IIB T3, T4

**MOTORS**

0,37 kW: 3-phase 1400G 50 Hz GAS

0,37 kW: 3-phase 1660G 60 Hz GAS

0,37 kW: 3-phase 1375G 50 Hz DUST

0,37 kW: 3-phase 1375G 60 Hz DUST

**PRIUS D for HIGH PRESSURE with 3-PHASE motor and ATEX certification** has: PTFE diaphragm, SS pump head, aluminium enclosure, spring return mechanism, flow regulation and double ball check valve.



# FEATURES

- Stainless steel (AISI420) plunger
- Aluminium enclosure
- Spring return mechanism
- Double ball check valve
- 3-phase motor

STROKE LENGTH PLUNGER	50Hz	SPM	PRESSURE		CAPACITY		HOSES CONNECTION	3G	3D
			bar	psi	l/h	gph	SS	Motor kW	Motor kW
14	010024	175	10	145	24	6,3	R1/2"	0,18	0,25
	010013	94			13	3,4			
	010010	70			10	2,6			
	010005	35			5	1,3			
25	010080	175	10	145	80	21,1	R1/2"	0,18	0,25
	010043	94			43	11,3			
	010032	70			32	8,4			
	010016	35			16	4,2			
32	010130	175	10	145	130	34,3	R1/2"	0,18	0,25
	010070	94			70	18,4			
	010052	70			52	13,7			
	010026	35			26	6,8			
40	010210	175	10	145	210	55,4	R3/4"	0,37	0,37
	010113	94			113	29,8			
	010084	70			84	22,1			
	010042	35			42	11			
50	010320	175	10	145	320	84,5	R3/4"	0,37	0,37
	010172	94			172	45,4			
	010128	70			128	33,8			
	010064	35			64	16,9			
63	007508	175	7	101,5	508	134,1	R1"	0,55	0,55
	007273	94			273	72,1		0,37	0,37
	007203	70			203	53,6			
	007101	35			101	26,6			

# PUMP HEAD / PLUNGERS

STROKE LENGTH PLUNGER	60Hz	SPM	PRESSURE		CAPACITY		HOSES CONNECTION	3G	3D
			bar	psi	l/h	gph	SS	Motor kW	Motor kW
14	010023	175	10	145	23	6	R1/2"	0,18	0,25
	010011	87			11	2,9			
	010005	44			5	1,3			
25	010076	175	10	145	76	20	R1/2"	0,18	0,25
	010038	87			38	10			
	010019	44			19	5			
32	010126	175	10	145	126	33,2	R1/2"	0,18	0,25
	010063	87			63	16,6			
	010031	44			31	8,1			
40	010195	175	10	145	195	51,5	R3/4"	0,37	0,37
	010097	87			97	25,6			
	010048	44			48	12,6			
50	010300	175	10	145	300	79,2	R3/4"	0,37	0,37
	010150	87			150	39,6			
	010075	44			75	19,8			
63	007469	175	7	101,5	469	123,8	R1"	0,55	0,55
	007234	87			234	61,8		0,37	0,37
	007117	44			117	30,9			

AISI 316L



AISI 420



# Plunger Pumps



## PRIUS P ATEX 2D/2G 50 Hz 3-PHASE



**CATEGORY 2**

Installation areas liable to be endangered by explosive atmospheres. Pumps intended for use in areas in which explosive atmospheres are likely to occur.

	G (gas)	D (dust)
199/92/EC	Zone 1	Zone 21

ATEX-approved pumps are for use in **potentially explosive atmospheres**.

Explosive atmospheres consists of air and combustible matter, such as gases, vapours, mists or dusts in which the explosion spreads after ignition.

We offer explosion-proof or dust-ignition-proof motors in accordance with the ATEX directive **2014/34/UE**.

ATEX-approved pumps can be used in areas (zones) classified according to the directive 1999/92/EC.

**ATEX**

CE II 2D IIIC T200°C, resp T135°C

CE II 2G c IIB T3, T4

**MOTORS**

- 0,18 kW: 3-phase 1400G 50 Hz GAS
- 0,37 kW: 3-phase 1400G 50 Hz GAS
- 0,55 kW: 3-phase 50 Hz GAS
- 0,25 kW: 3-phase 1325G 50 Hz DUST
- 0,37 kW: 3-phase 1375G 60 Hz DUST
- 0,55 kW: 3-phase 50 Hz DUST
- 0,18 kW: 3-phase 1660G 60 Hz GAS
- 0,37 kW: 3-phase 1660G 60 Hz GAS
- 0,55 kW: 3-phase 60 Hz GAS
- 0,25 kW: 3-phase 1325G 60 Hz DUST
- 0,37 kW: 3-phase 1375G 60 Hz DUST
- 0,55 kW: 3-phase 60 Hz DUST

**PRIUS P with 3-PHASE motor and ATEX certification** has: SS plunger, aluminium enclosure, flow regulation and double ball check valve.



# FEATURES

- Ceramic plunger
- Aluminium enclosure
- Spring return mechanism
- Double ball check valve
- 3-phase motor

STROKE LENGTH PLUNGER	50Hz	SPM	PRESSURE		CAPACITY		HOSES CONNECTION	3G	3D
			bar	psi	l/h	gph	SS	Motor kW	Motor kW
14	010024	175	10	145	24	6,3	R1/2"	0,18	0,25
	010013	94			13	3,4			
	010010	70			10	2,6			
	010005	35			5	1,3			
25	010080	175	10	145	80	21,1	R1/2"	0,18	0,25
	010043	94			43	11,3			
	010032	70			32	8,4			
	010016	35			16	4,2			
32	010130	175	10	145	130	34,3	R1/2"	0,18	0,25
	010070	94			70	18,4			
	010052	70			52	13,7			
	010026	35			26	6,8			
40	010210	175	10	145	210	55,4	R3/4"	0,37	0,37
	010113	94			113	29,8			
	010084	70			84	22,1			
	010042	35			42	11			
50	010320	175	10	145	320	84,5	R3/4"	0,37	0,37
	010172	94			172	45,4			
	010128	70			128	33,8			
	010064	35			64	16,9			

# PUMP HEAD / PLUNGERS

STROKE LENGTH PLUNGER	60Hz	SPM	PRESSURE		CAPACITY		HOSES CONNECTION	3G	3D
			bar	psi	l/h	gph	SS	Motor kW	Motor kW
14	010023	175	10	145	23	6	R1/2"	0,18	0,25
	010011	87			11	2,9			
	010005	44			5	1,3			
25	010076	175	10	145	76	20	R1/2"	0,18	0,25
	010038	87			38	10			
	010019	44			19	5			
32	010126	175	10	145	126	33,2	R1/2"	0,18	0,25
	010063	87			63	16,6			
	010031	44			31	8,1			
40	010195	175	10	145	195	51,5	R3/4"	0,37	0,37
	010097	87			97	25,6			
	010048	44			48	12,6			
50	010300	175	10	145	300	79,2	R3/4"	0,37	0,37
	010150	87			150	39,6			
	010075	44			75	19,8			

PP



CERAMIC  
SIALOX96





# PRIUS P ATEX 3D/3G

## 50/60 Hz 3-PHASE



**CATEGORY 3**

Installation areas liable to be endangered by explosive atmospheres. Pumps intended for use in areas in which explosive atmospheres are only rarely occur.

	<b>G</b> (gas)	<b>D</b> (dust)
199/92/EC	Zone 2	Zone 22

ATEX-approved pumps are for use in **potentially explosive atmospheres**.

Explosive atmospheres consists of air and combustible matter, such as gases, vapours, mists or dusts in which the explosion spreads after ignition.

We offer explosion-proof or dust-ignition-proof motors in accordance with the ATEX directive **2014/34/UE**.

ATEX-approved pumps can be used in areas (zones) classified according to the directive 1999/92/EC.

**ATEX**

  II 3D Ex h III C T200°C, resp T135°C Dc

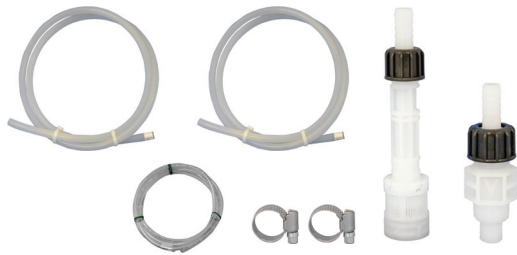
  II 3G Ex h IIB T3, T4 Gc

**MOTORS**

- 0,18 kW: 3-phase 1400G 50 Hz GAS
- 0,37 kW: 3-phase 1400G 50 Hz GAS
- 0,55 kW: 3-phase 50 Hz GAS
- 0,25 kW: 3-phase 1325G 50 Hz DUST
- 0,37 kW: 3-phase 1375G 60 Hz DUST
- 0,55 kW: 3-phase 50 Hz DUST
- 0,18 kW: 3-phase 1660G 60 Hz GAS
- 0,37 kW: 3-phase 1660G 60 Hz GAS
- 0,55 kW: 3-phase 60 Hz GAS
- 0,25 kW: 3-phase 1325G 60 Hz DUST
- 0,37 kW: 3-phase 1375G 60 Hz DUST
- 0,55 kW: 3-phase 60 Hz DUST

**PRIUS P with 3-PHASE motor and ATEX certification** has: SS plunger, aluminium enclosure, flow regulation and double ball check valve.





#### A. INSTALLATION KIT

*Included without extraprise*

- 1/2" foot filter with 13 mm (int. diam.) hose fitting
- 3/4" injection valve
- PVDF delivery hose (13X16 PVDF or 12x18 PVC)
- PVDF suction hose (13X16 PVDF or 12x18 PVC)



#### B. INSTALLATION KIT

- 1 1/2"foot filter with 18 mm (int. diam.)
- hose fitting (G1 1/2" - 18 mm)
- Suction hose - 18x25 PE
- Delivery hose - 18x22 PVDF



#### C. INSTALLATION KIT

- 1 1/2"foot filter with 32 mm (int. diam.)
- hose fitting (G1 1/2" - 32 mm)
- 1 1/2" injection valve
- Suction hose - 32x40 PVC (spiral hose)
- Delivery hose - 32x42 PVC (meshed)

## ACCESSORIES



#### PRESSURE / SECURITY VALVE

The pressure/security valve, directly controlled by the medium, is used in technical processing plants keep constant working pressures on the primary side. The pressure/security valve can also be used as an overflow valve to prevent pressure peaks. In this case, the pressure/security valve is fitted in a bypass line.

Operating Pressure: 0,5-10 bar

Opening Pressure: 0,3 bar



#### PULSATION DAMPENERS

SOIM2.5 - SOIM5

PVC pulsation dampener without membrane.

FKM B o-ring.

Available in 2,5 liter (SIOM2.5)

and 5 liter (SOIM5).

Ms Dung 0918077755

E: [dung.nguyen@vietthaiqua.com](mailto:dung.nguyen@vietthaiqua.com)

# PRIUS

